

Lau, Horton & Wise LLP
in Association with CMS Hasche Sigle, Hong Kong LLP
劉賀韋律師事務所有限法律責任合夥
與 CMS 德和信律師事務所聯盟

CMS
law·tax·future

CMS Hong Kong

CMS Hong Kong – join us

As the Managing Partner of CMS in Beijing and Hong Kong, I am delighted to introduce you to CMS in Hong Kong and the APAC region. We are very much in “growth mode” in Hong Kong and have expanded significantly in recent years, with plans to grow further. Currently, we serve clients across all areas of Commercial/IP, Corporate/M&A, Finance and Dispute Resolution within eight industry sectors including Consumer Products, Energy & Climate Change, Financial Services, Infrastructure & Project Finance, Insurance, Life Sciences & Healthcare, Shipping and Technology, Media & Communications (TMC).

Our unique offering in Hong Kong enables us to provide both local and international legal advice, from both common law and civil law perspectives, across the Asia-Pacific region and beyond. Many of our partners and teams are leaders in their fields, presenting you with the opportunity to work with first class, commercially-minded lawyers, and to support global players in the industry on their most strategic and complex transactions and cases.

From day one, you will be given the tools, resources and technology that you would expect at a future facing firm. We have invested heavily in technology to provide you with an agile working environment to help achieve a sustainable balance between work and home. We are also committed to your professional and personal development and provide extensive training courses, available in multiple formats, to help you thrive and progress along your chosen career path.

We have a strong D&I ethos, which is seen throughout CMS. Furthermore, we are passionate about giving back to the local community and actively encourage you to participate in local community initiatives – in fact, it is our trainees and junior fee-earners who brainstorm, execute and coordinate our CSR initiatives. For example, we participated in the inaugural Hong Kong Legal Walk and have organised team events at both the Crossroads Foundation and Food Angel organisations in the last year or so. We are now driving forward a number of sustainability initiatives, including working with a local bee farm. It is creating quite a buzz in the office!

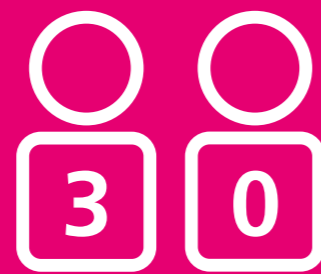


Nick Beckett
Managing Partner,
Beijing and Hong
Kong Offices

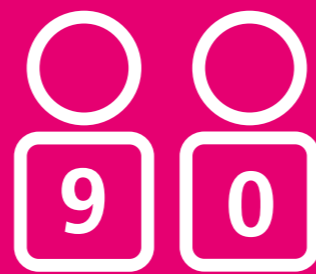
CMS Asia-Pacific at a glance



Offices in the region:
Beijing, Brisbane, Hong Kong,
Shanghai and Singapore



Number of partners



Number of lawyers



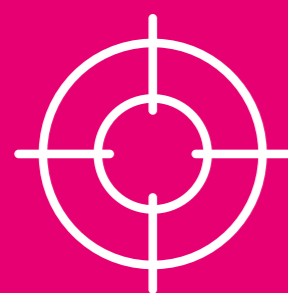
Nine nationalities speaking
over 10 languages fluently



Full service across the region



Local and international law
capability via local collaborations



Sector focused – automotive,
energy, financial institutions,
infrastructure, life sciences,
manufacturing, real estate
and technology, media and
communications



Civil law and
common law advice



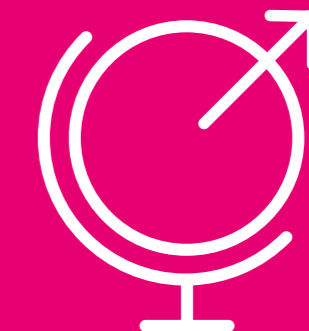
Ranked in Asian Legal Business'
(ALB) 'Top 50 Largest law Firms
in Asia' and 'Top 30 Largest
Firms in China'



Award winning – FT Innovative
Law Awards, ALB Employer of
Choice, SE Asia Law Awards



Advising international businesses
operating and investing in Asia



Advising Asian businesses on
local and international issues

Our locations

The Americas

Bogotá
Cúcuta
Lima
Mexico City
Rio de Janeiro
Santiago de Chile

Europe

Aberdeen	Edinburgh	Lyon	Sheffield
Amsterdam	Frankfurt	Madrid	Skopje
Antwerp	Funchal	Manchester	Sofia
Barcelona	Geneva	Milan	Stavanger
Belgrade	Glasgow	Monaco	Strasbourg
Bergen	Hamburg	Munich	Stuttgart
Berlin	Istanbul	Oslo	Tirana
Bratislava	Kyiv	Paris	Vienna
Bristol	Leipzig	Podgorica	Warsaw
Brussels	Lisbon	Poznan	Zagreb
Bucharest	Liverpool	Prague	Zurich
Budapest	Ljubljana	Reading	
Cologne	London	Rome	
Duesseldorf	Luxembourg	Sarajevo	

Casablanca
Johannesburg
Luanda
Maputo
Mombasa
Nairobi

Africa

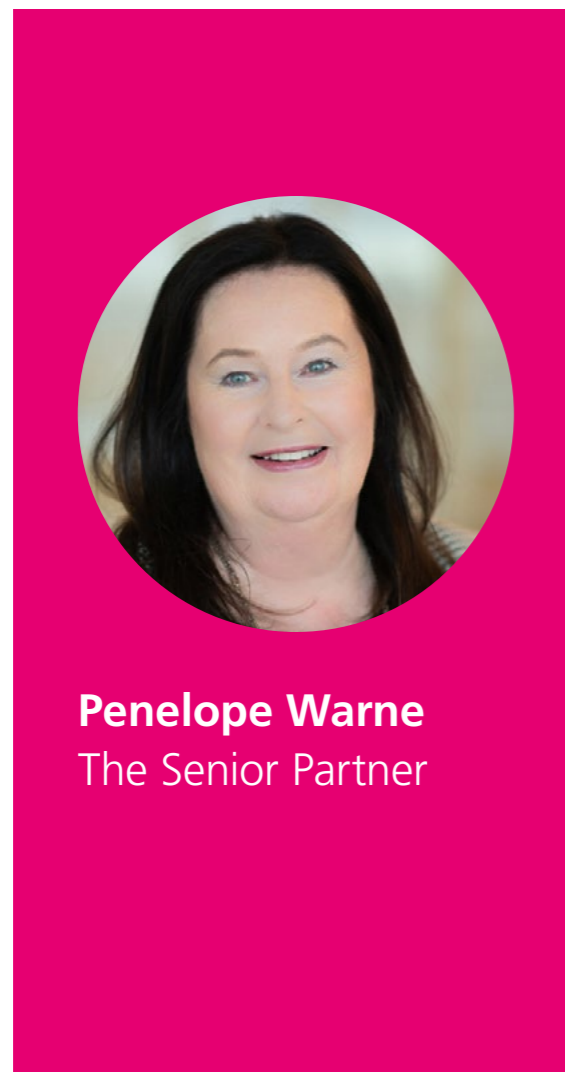
Abu Dhabi
Dubai
Muscat
Tel Aviv

Middle East

Beijing
Brisbane
Hong Kong
Shanghai
Singapore

Asia-Pacific

Responsible Business & Social Impact



Penelope Warne
The Senior Partner



Responsible business lies at the heart of the firm and our purpose is to inspire, impact and support our clients, people, industry sectors and communities and to deliver excellence.

Our work is focused on three key pillars:

Our business – we are committed to operating responsibly and making a positive contribution to society.



Our environmental impact – we are committed to addressing our impact on the environment and have set ambitious climate action commitments.



Our social impact – we work together to ensure we make a positive difference to our communities both locally and globally.



Guiding all our work in this area are the UN Global Goals and our commitment to the UN Global Compact.



As a business, our clients are at the centre of all we do and we often work in partnership with them to deliver the most impact. We are currently working with over 30 clients on social impact initiatives.



The firm values the time spent on social impact initiatives. We encourage all staff (including our colleagues from outsourced partners) to spend at least 50 hours a year on CMS pro bono and volunteering activities. Up to 8 hours can also be spent on non-CMS volunteering activities that address a clear social need.

Our Guiding Principles

Thriving

Working at CMS means working somewhere that's as invested in the future as you are, where purpose, passion and professionalism drive us forward.

Together

We're a community of colleagues, working beyond boundaries to make sure the best advice is available worldwide, facing challenges and developing solutions together.

Agile

Having done it before isn't a reason to do it again. It's our dynamic, inventive outlook that keeps us ahead of the curve and always at our best.

Inclusive

This is a team to belong to. A team that brings out the best in us and our ambitions. A team that has Diversity and Inclusion at its core, because we're all here to help each other succeed.



The CMS Difference

The CMS Difference is how we **bring our guiding principles to life**. This is what it means to be a **part of CMS**. This is our relationship with each other, **built on trust**.

It looks to the future world of work, for both ourselves and our clients, enabling agility, and different ways of thinking and doing.

What CMS offers you

The Leading Relationship Law Firm

We're the firm we are because of the relationships we build. That includes our relationship with you. We're interested in what makes you you, and invested in your success.

What CMS asks of you

Bring your best to change the face of law

We are at our best when you are, and we create major change when we're all aiming higher. So from the big deals to the everyday details, we want you to give it everything you've got.





Stories from our people: **Simon Barrell**



This is a young and dynamic team with interesting clients and a wide range of high-profile work...

"I joined the Banking and Finance Team in the Hong Kong office in December 2021.

This is a young and dynamic team with interesting clients and a wide range of high-profile work, including transactions winning 'Deal of the Year' awards. The team is expanding rapidly and growing its reputation in the market. It also 'punches above its weight' and works on transactions with major banks and corporates.

It is great to have the support of the firm's international network. In view of the international nature of most of our transactions, we regularly work with our international colleagues across different time zones.

I very much appreciate the support of our Banking Knowledge Team in the UK when one is looking for precedents and know-how on particular topics.

Everyone in the Hong Kong office is very friendly and down to earth. Outside of work, there are lots of social activities (such as film nights) and CSR events (such as helping local charities). A recent event that I particularly enjoyed was an evening barbecue at Aberdeen Boat Club on Middle Island. We also have our own dragon boat team (called 'Firequackers'), which trained at weekends to compete in the International Dragon Boat Championships in Stanley (one of the biggest dragon boat racing events of the year in Hong Kong)."



Simon Barrell
Of Counsel
Finance
CMS Hong Kong

Stories from our people:

Eugene Wong



The training and professional support has been instrumental to my development and allowed me to explore both my interests and strengths.

"I joined CMS in 2019 after attending the Hong Kong office's first summer internship program and heartily recommend the program as it provides valuable insight into the type of clients and cases which the firm regularly advises on.

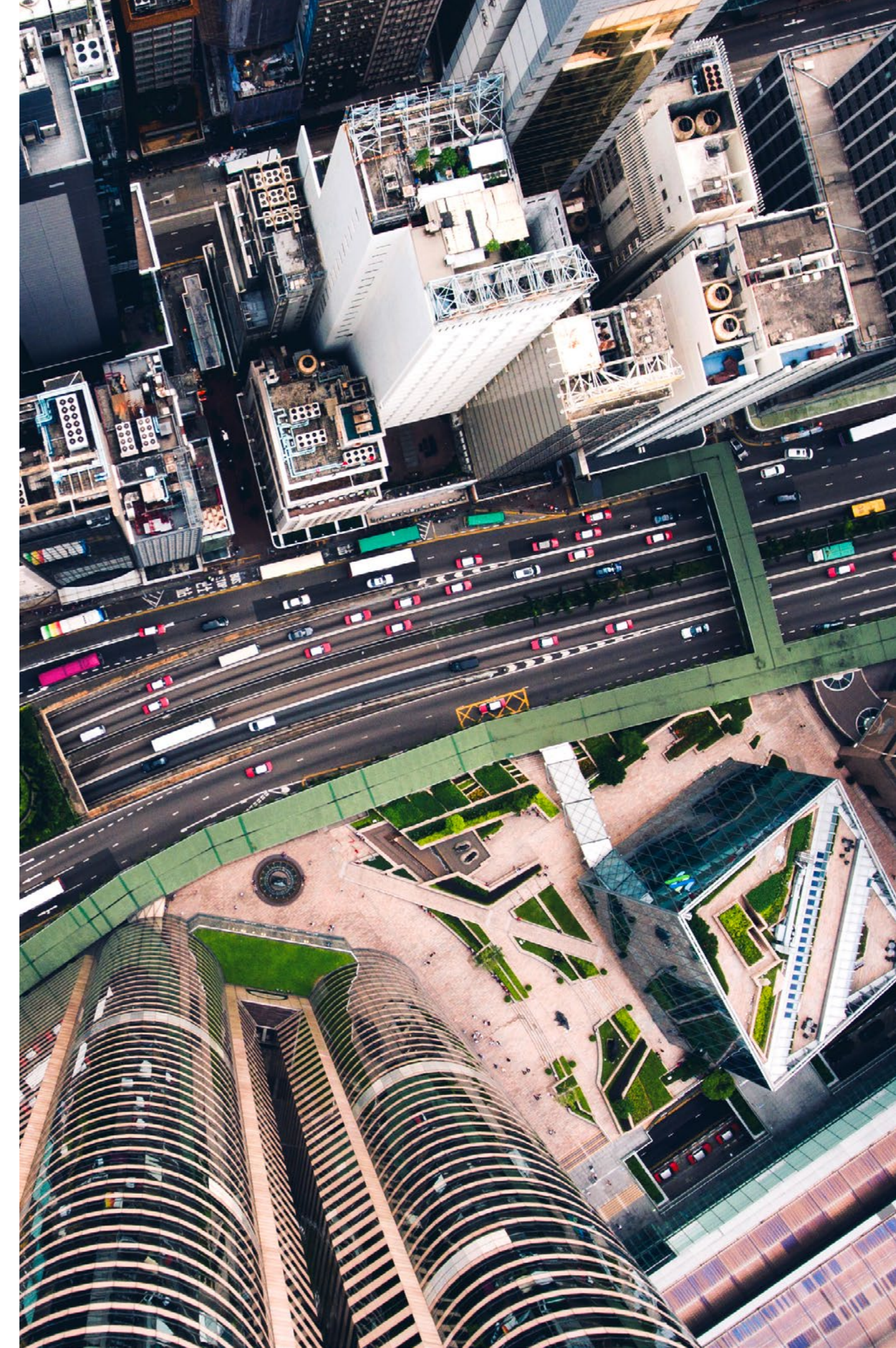
During my time at the firm, I have been fortunate to work on a variety of matters for international clients of all shapes and sizes – from listed companies to start ups. The training and professional support has been instrumental to my development and allowed me

to explore both my interests and strengths. In terms of culture, my diverse and dynamic colleagues have fostered an open-door policy where I feel welcome to share my views.

In respect of CSR, the firm has been actively engaged in various initiatives both locally and internationally including contributions to the Médecins Sans Frontières cookbook, volunteering at the Crossroads Foundation and preparing food at Food Angel. In this regard, I have been pleasantly surprised by the firm's willingness to explore and support new initiatives."



Eugene Wong
Associate
Commercial / IP
CMS Hong Kong





Stories from our people:

Vivian Tse



I have also participated in the CMS Academy for Associates where I met associates from various offices and different practice areas thereby broadening my horizon and social network.

"I joined CMS as an associate of the Corporate department in May 2018 when CMS first launched its Hong Kong practice. During these five years, I have witnessed the growth of CMS in the Hong Kong market amid the impact brought by COVID-19, where our Hong Kong office now has 11 partners covering a wide spectrum of practice areas, such as Commercial, Corporate, Banking & Finance, Insurance, Intellectual Property, Technology, Media &

Communications, Dispute Resolution, etc. Benefiting from CMS's extensive global network, I have ample opportunities to work with colleagues from different offices (including both common law and civil law jurisdictions). I have also participated in the CMS Academy for Associates where I met associates from various offices and different practice areas thereby broadening my horizon and social network. I am also involved in the annual internship programme where I have the chance to interact with and select future young talent who possess the necessary expertise and capabilities to contribute to the further growth of the CMS community."



Vivian Tse
Senior Associate
Corporate / M&A
CMS Hong Kong

Stories from our people:

Helen Tang



The global connection is unparalleled and is highly beneficial to the international practice that the team has.

"I joined CMS with partners, Steven Wise and Andrew Horton, in September 2018. From a team of eight, the LAIE team in the Hong Kong office is now 16 people strong with a few more newcomers joining our team in September 2023. The team works hard and plays hard and echoing the culture of CMS, the team is collegiate, this is why we continue to attract new talent to join.

The size and global coverage of the CMS offices allows collaboration between teams and offices. This is an aspect that I thoroughly enjoy as I have learnt so much from my colleagues in other teams and offices. The global connection is unparalleled and is highly beneficial to the international practice that the team has.

The firm offers great support to its employees, whether in respect of work or the employees' wellbeing. The firm offers various courses and training on technical knowledge, soft skills etc. and there are different support teams providing the help that you require. In terms of wellbeing, there are many wellbeing initiatives, including a number of Wellbeing Ambassadors in each office with whom employees can have a discreet and confidential conversation for problems they have or if they simply wish to talk. With the support system that the firm offers, this is a place that one can truly thrive in."



Helen Tang
Of Counsel
Dispute Resolution
CMS Hong Kong





Case study:

China Guangdong Hong Kong Greater Bay Area Holdings

China Guangdong – Hong Kong Greater Bay Area Holdings, is a private company incorporated in Hong Kong. We assisted in its acquisition of the majority stake in Hydoo International Holding, a Cayman company listed on the Main Board of the Hong Kong Stock Exchange and principally engaged in the development and operation of trade centres and logistics centres in China.

The work involved an extensive due diligence investigation (legal and financial) into the affairs of the listed group, covering various jurisdictions, including China, Hong Kong and Cayman. It also included the drafting and negotiation of a share purchase agreement, which triggered the client's obligation to make a mandatory unconditional cash general offer for the remaining shares in the listed company under the Hong Kong Takeovers Code.



The total transaction amount was HK\$ 1,133m and involved a novel multi-jurisdictional (China, Ireland and Hong Kong) financing arrangement to fund the acquisition and the general offer.



The total assets of the listed group at the time amounted to approximately RMB 14,957m.



Case study:

MV “MILANO BRIDGE”

MV “MILANO BRIDGE” is a container ship with gross tonnage in excess of 150,000 MT. On 6 April 2020, MV “MILANO BRIDGE” allided with the port operated by Pusan Newport Co., Ltd in Busan, South Korea, causing immediate damage to the port as well as the collapse of cranes at the port. There are a number of videos of the allision on the internet which shows the collapse of the cranes. The claim of Pusan Newport was estimated to be in excess of USD 100m for property damaged and business interruption due to the allision. We represented Pusan Newport.

Whilst a vessel can limit her liability pursuant to the Tonnage Convention, the limitation available to a vessel differs in each jurisdiction depending on the version of the Tonnage Convention applicable in the particular

jurisdiction. It is therefore very important for a claimant as to which court seize jurisdiction of the matter. There is a fine balance between forum shopping and serving justice given a claimant’s claim can be heavily limited simply because a particular jurisdiction has not rectified the latest version of the Tonnage Convention.

The work involved the arrest of a sistership of MV “MILANO BRIDGE” in Hong Kong, the negotiation of security, the collaboration with lawyers in Australia, Japan and South Korea and working with technical experts and forensic accountants on the allision as well as the claim amount. This showcases the type of work that the team regularly deals with, which often is cross-discipline and cross-border.



Case study:

Tsingshan Nickel Crisis

Tsingshan Group (the world's largest nickel metal producer) suffered heavy losses in its nickel trading, following a short squeeze in early March 2022. The media reported that "Tsingshan could have suffered well over USD 2bn of daily losses at the most extreme point of nickel's surge".

The crisis arose as a result of the Western sanctions against Russia. The price of nickel suddenly rose 500% in a single day, to above USD 100,000 per tonne on 8 March 2022. This prompted the London Metal Exchange (LME) to stop trading and cancel contracts to prevent a systemic meltdown. The media described this nickel crisis as 'unprecedented', 'never happened before in the history of the nickel market', 'the mother of all short squeezes'.

We advised Bank of China on the successful workout of the Tsingshan-LME nickel derivatives crisis with the dire special situation successfully being restructured within 6 months and resulting in the Bank of China suffering no losses.

The deal was named as one of the "Deals of the Year 2022" by China Business Law Journal.

CMS Law-Now™

Your free online legal information service.

A subscription service for legal articles on a variety of topics delivered by email.

cms-lawnow.com

The information held in this publication is for general purposes and guidance only and does not purport to constitute legal or professional advice. It was prepared in co-operation with local attorneys.

CMS Legal Services EEIG (CMS EEIG) is a European Economic Interest Grouping that coordinates an organisation of independent law firms. CMS EEIG provides no client services. Such services are solely provided by CMS EEIG's member firms in their respective jurisdictions. CMS EEIG and each of its member firms are separate and legally distinct entities, and no such entity has any authority to bind any other. CMS EEIG and each member firm are liable only for their own acts or omissions and not those of each other. The brand name "CMS" and the term "firm" are used to refer to some or all of the member firms or their offices; details can be found under "legal information" in the footer of cms.law.

CMS locations:

Aberdeen, Abu Dhabi, Amsterdam, Antwerp, Barcelona, Beijing, Belgrade, Bergen, Berlin, Bogotá, Bratislava, Brisbane, Bristol, Brussels, Bucharest, Budapest, Casablanca, Cologne, Cúcuta, Dubai, Duesseldorf, Edinburgh, Frankfurt, Funchal, Geneva, Glasgow, Hamburg, Hong Kong, Istanbul, Johannesburg, Kyiv, Leipzig, Lima, Lisbon, Liverpool, Ljubljana, London, Luanda, Luxembourg, Lyon, Madrid, Manchester, Maputo, Mexico City, Milan, Mombasa, Monaco, Munich, Muscat, Nairobi, Oslo, Paris, Podgorica, Poznan, Prague, Reading, Rio de Janeiro, Rome, Santiago de Chile, Sarajevo, Shanghai, Sheffield, Singapore, Skopje, Sofia, Stavanger, Strasbourg, Stuttgart, Tel Aviv, Tirana, Vienna, Warsaw, Zagreb and Zurich.

cms.law

CMS Hong Kong

APPLY NOW >



WeChat

CMS Careers

E talentacquisition@cms-cmno.com

